

Leaflet

The setting up of IT equipment in escape routes

With the entry of new fire safety regulations of the VKF on the 01.01.2015 there are new requirements for the use/arrangement of IT equipment and office machines in emergency escape routes.

1. Terms

Example of IT equipment are:

- Information screens
- Workstations
- Projectors

Examples of electrical office machinery are:

- Printers
- Photocopiers
- All in one printers

2. Legal basis

It is in force since 01.01 2015 under VKF guidelines in 14-15 "Use of building materials" Paragraph 5.3.

Safety of IT Equipment (see appendix)

- 1. The setting up of the fire alarm/ intercom/ video system (e.g. screens), etc. in horizontal and vertical escape routes is allowed provided they comply with standard SN EN 60950-1 + A1 + A11 + A12 IT equipment- safety- Part 1: According to the general requirements, or standard SN EN 60065+A1+A11+A2+A12:2011 audio, video and similar electronic apparatus - Safety requirements, the necessary width of the emergency exit shall always be maintained and the shell of the vertical emergency exits should be made out of RF1 building materials.*

Office machines are permitted in horizontal escape routes provided that they comply with the standard SN EN 60950-1 + A1 + A11 + A12 IT equipment safety - Part 1: General requirements, or standard SN EN 60065+A1+A11+A2+A12:2011 audio, video and similar electronic apparatus - Safety requirements, and that they required width of escape routes is always maintained at all times.

- 2. Fire control and fire alarm systems (24/ DC, supply of fire panel), smoke and heat extraction control systems (24V/ DC, Supply from smoke control unit) may be installed in escape routes.*

3. Establishment

Screens in escape route (e.g. Emergency stairwells) are permitted if they are made out of RF1 materials (non-combustible materials) and correspond to SN EN 60950-1 or SN EN 60065. Screens in horizontal escape routes (e.g. Escape corridors) are permitted if they meet SN EN 60950-1 or SN EN 60065. The housing of the screens however do not need to comply with the building materials of RF1.

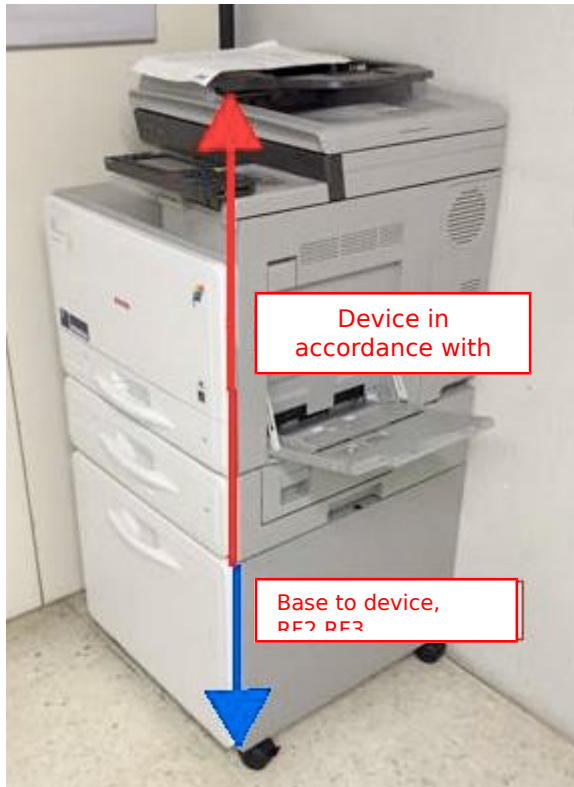
Multifunctional Devices in escape routes

Printers or multifunctional devices are not permitted in vertical escape routes (e.g. Emergency stairwells).

Printers or multifunctional devices can be placed in horizontal escape routes (e.g. Escape corridors) if they meet SN EN 60950-1 or SN EN 60065. A maximum of 2 devices may be operated per fire compartment.

For printers or multifunctional devices, the following requirements must be met:

Placement of the base cabinet, stand should be made out of non-combustible materials (RF1) or factory made foundations, visually the printer should look the same (material RF2, RF3).



Storage of paper

Printer paper must be stored in non-flammable cabinets (“RF1”= non-flammable, so metal) with front lockable storage. The cabinet doors must be kept closed.

Waste Container

Paper waste bins have to be made out of non-combustible material and exhibit a self-extinguishing function.

3. Specifying the location

The placement of the equipment is to be checked in advance by the Safety, Health & Environment staff for fire and explosive protection. To determine which areas are deemed as vertical or horizontal escape routes the escape plans of “large occupancy buildings” can be consulted at www.plan.ethz.ch.

4. Other electrical devices

Furthermore electrically powered appliances such as coffee machines, vending machines and kettles must not be set up or operated in escape routes.